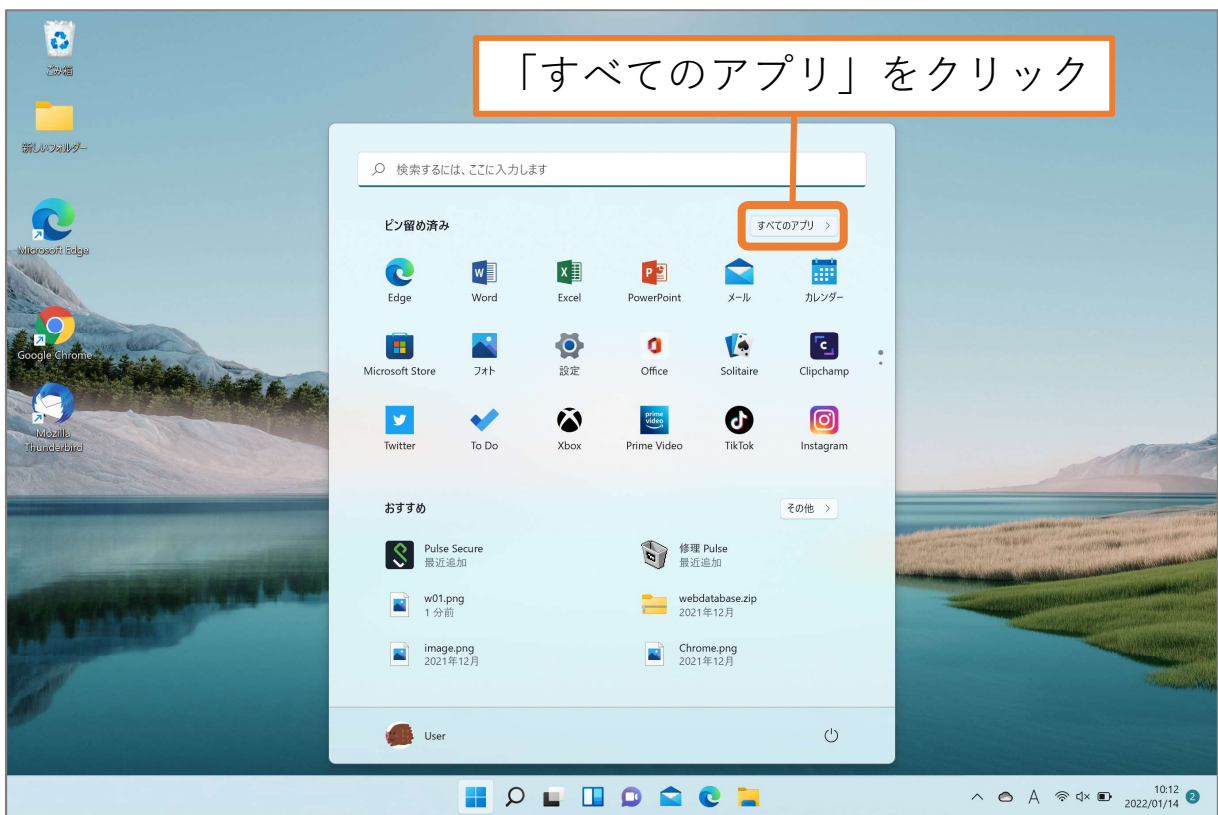
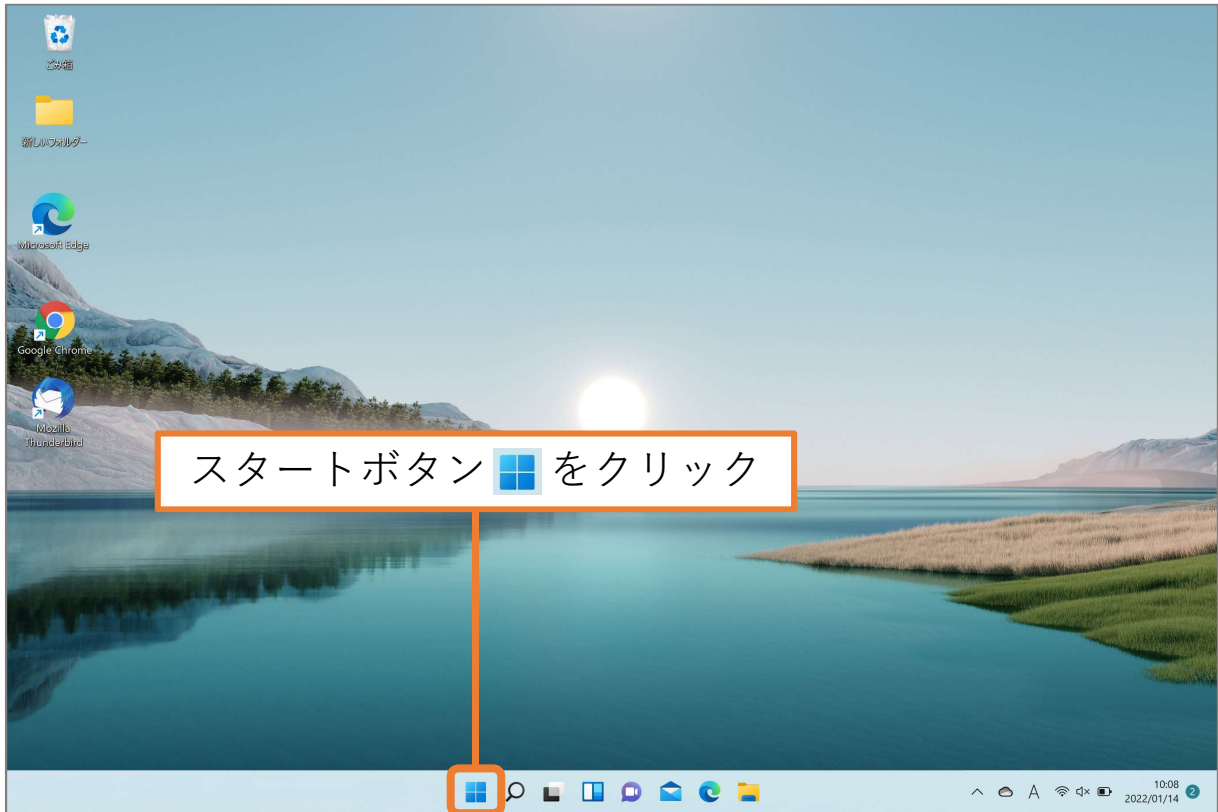
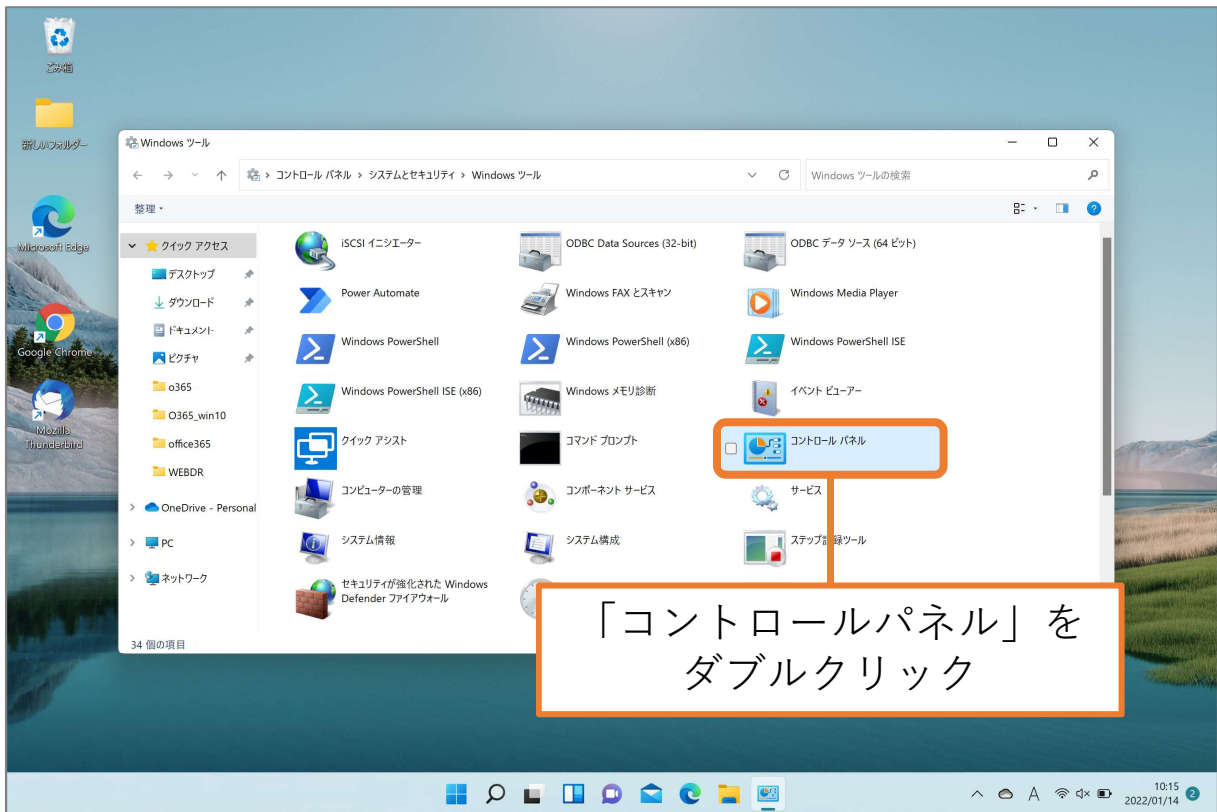
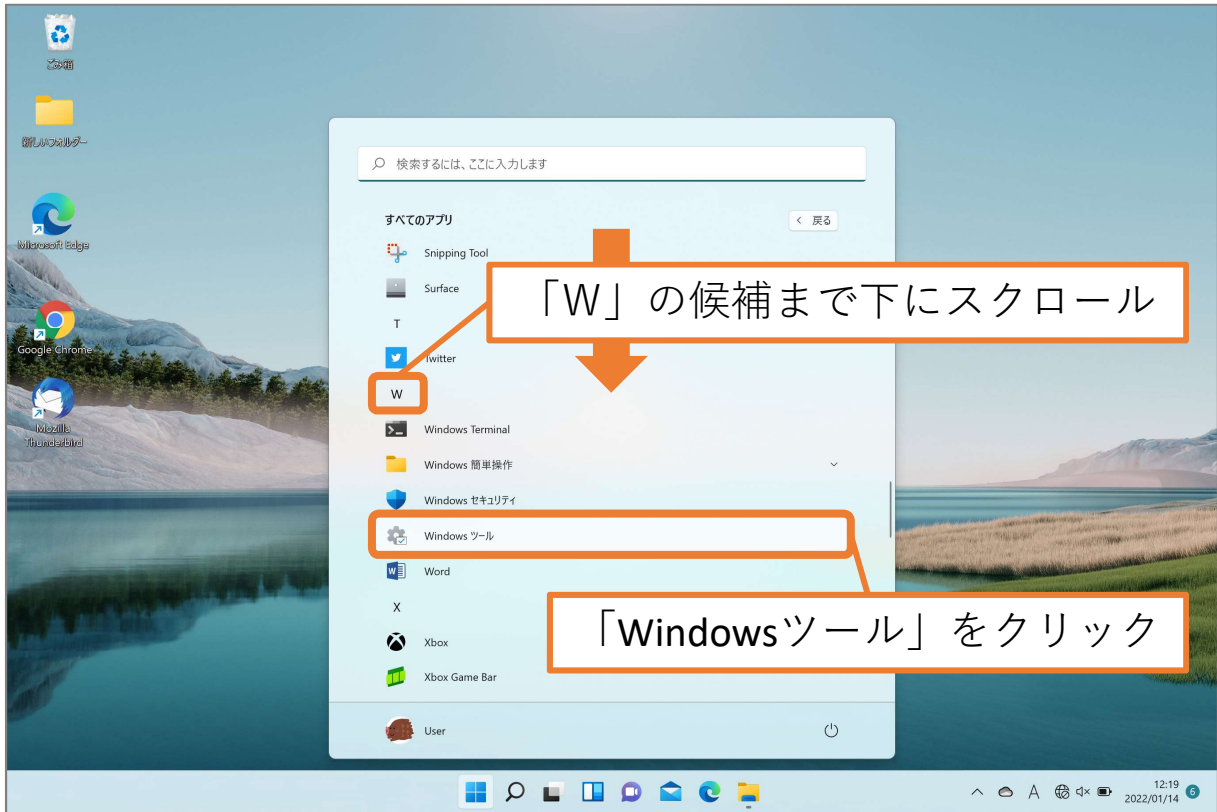


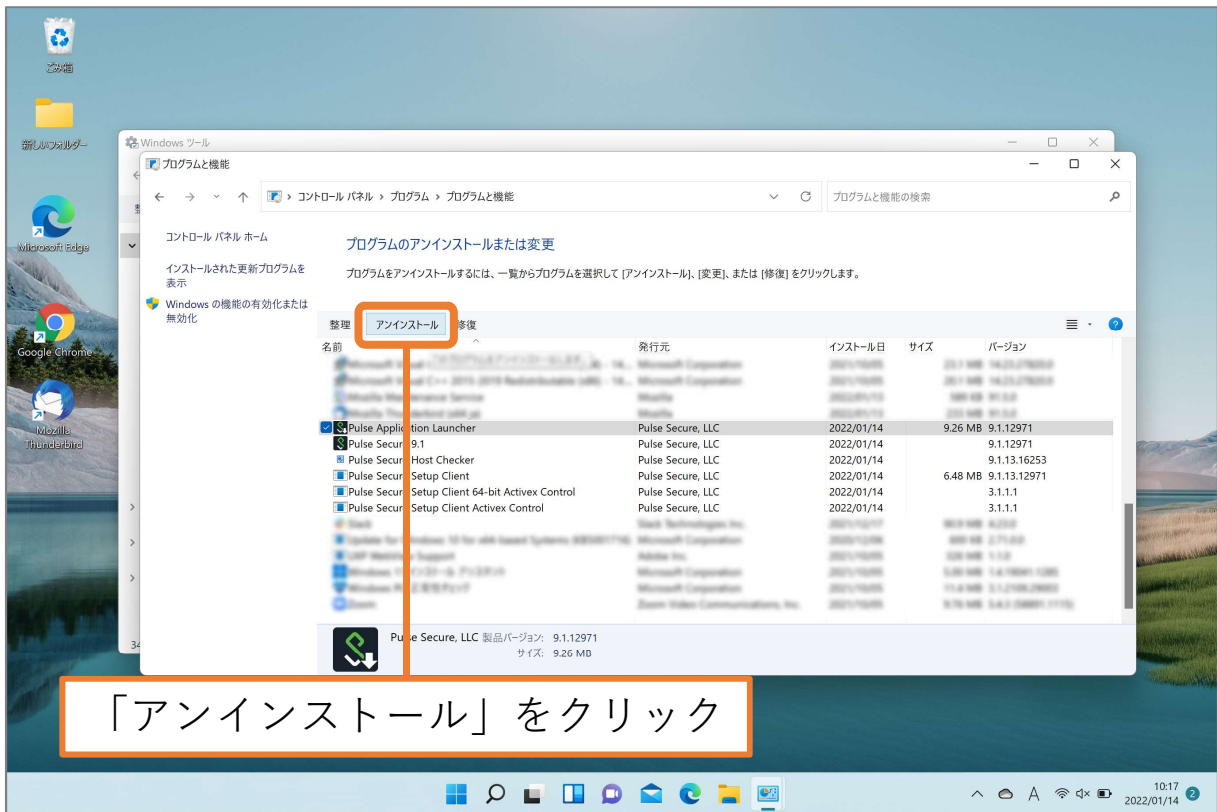
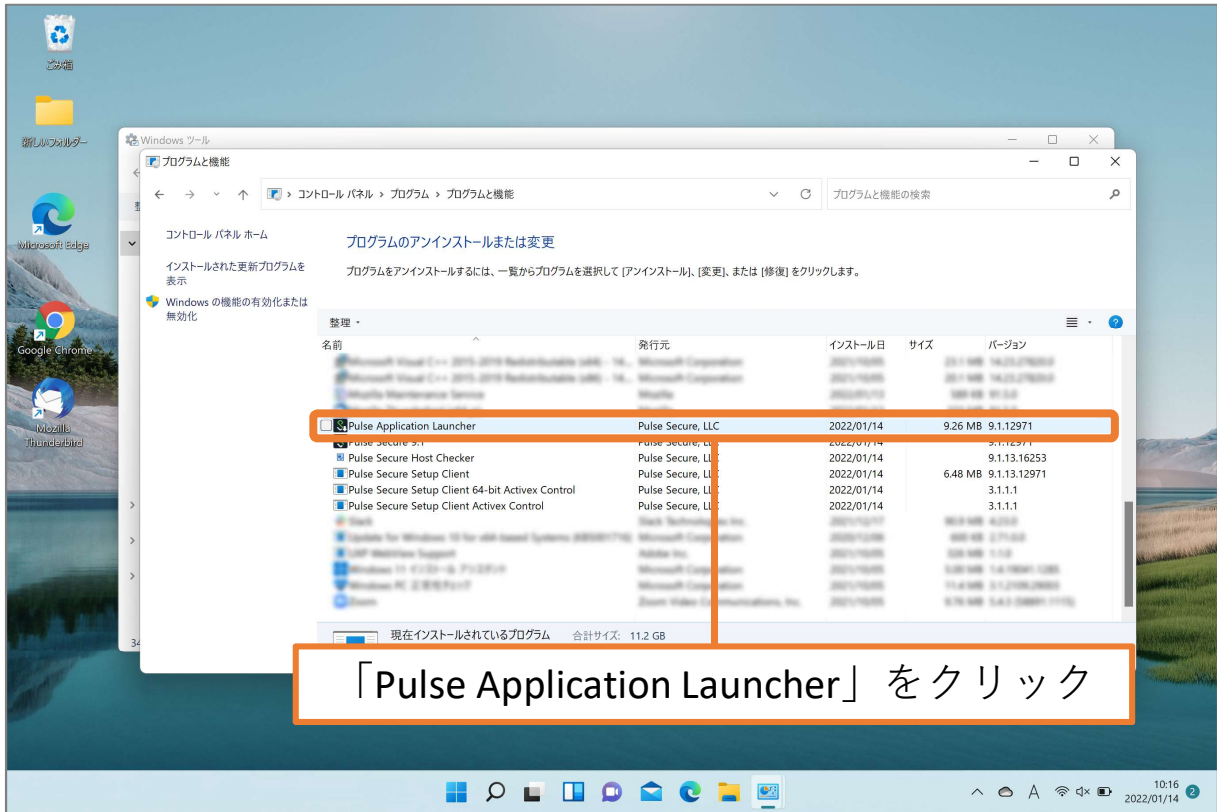
図書館Webデータベース・リモートアクセス

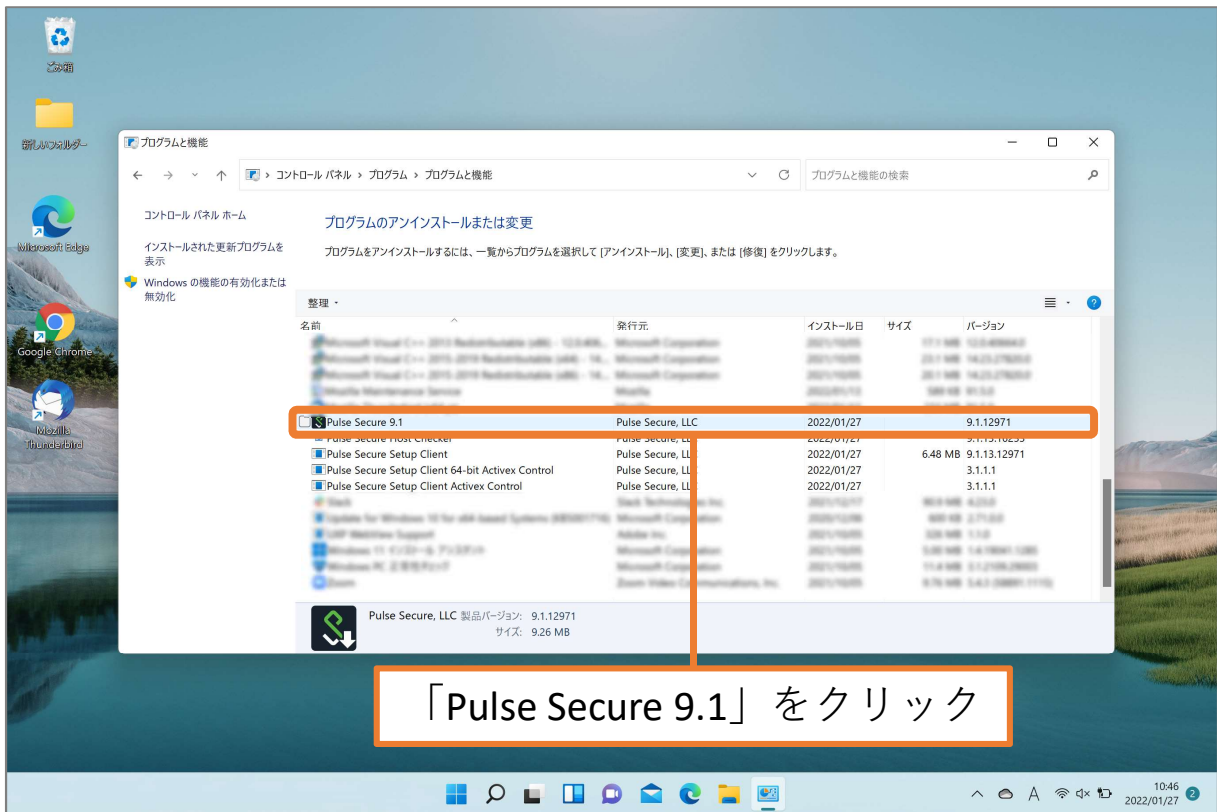
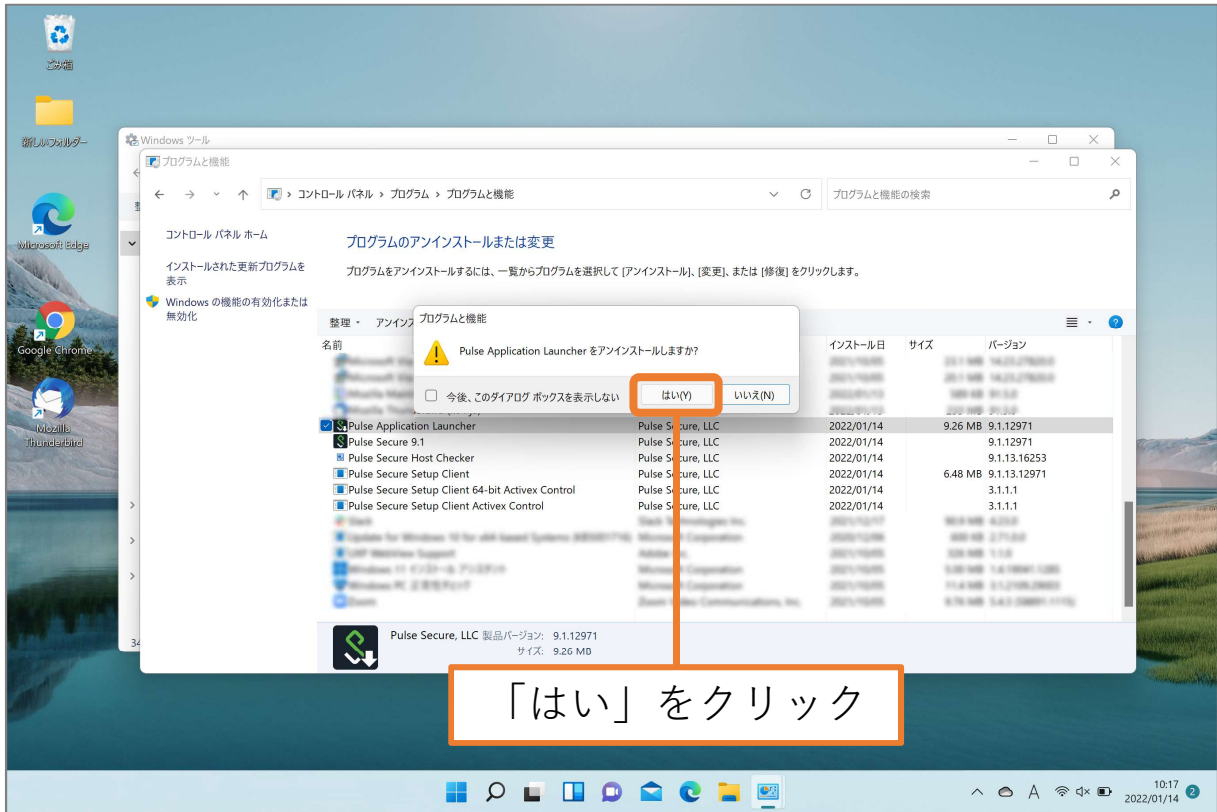
Pulse Secure アンインストール Windows11版

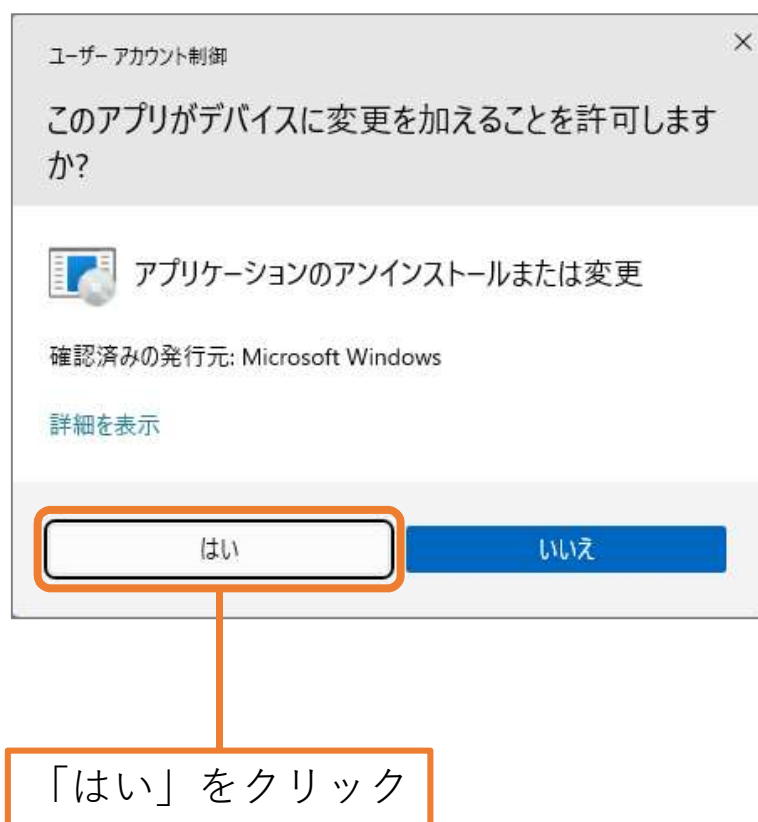
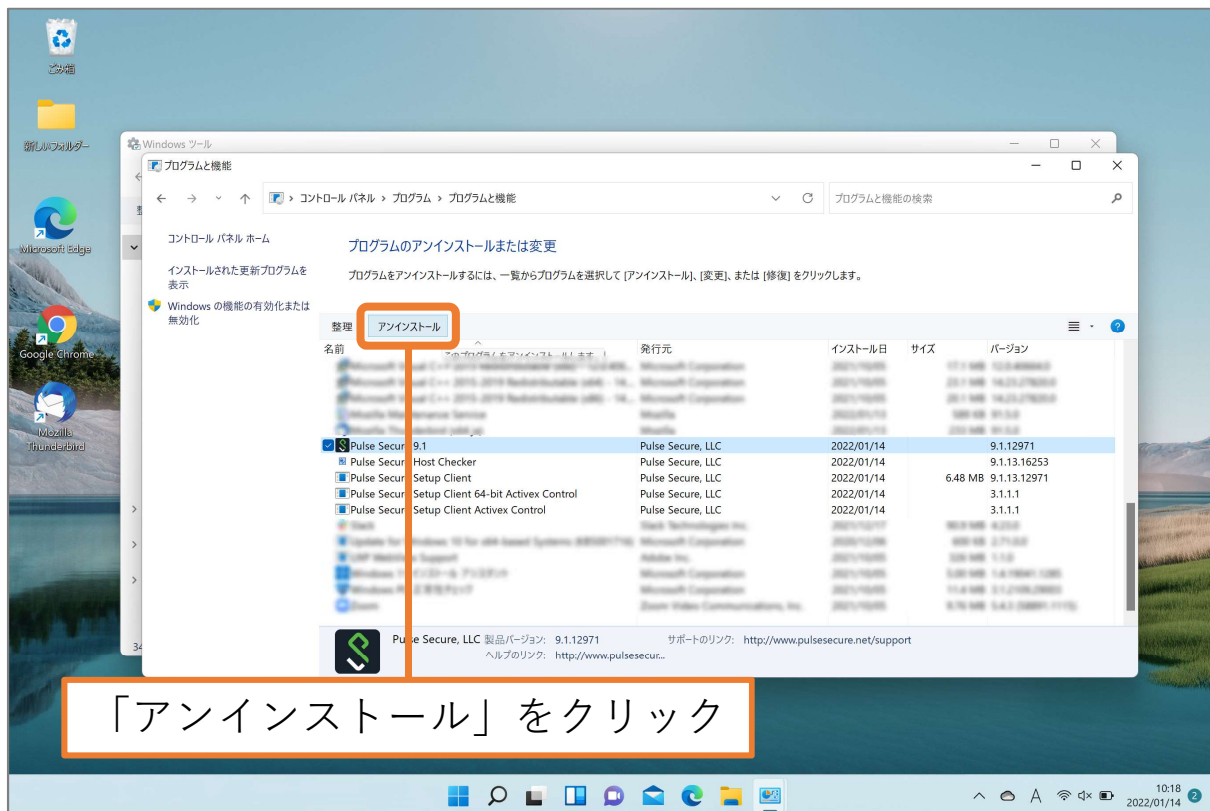
図書館Webデータベース・リモートアクセスの設定をやり直される場合は、マニュアルの最後まで操作を行った後、再度図書館Webデータベース・リモートアクセス利用申請のメールに記載されている<操作マニュアル>の12ページ（ページ下部番号）からの操作をお願いします。

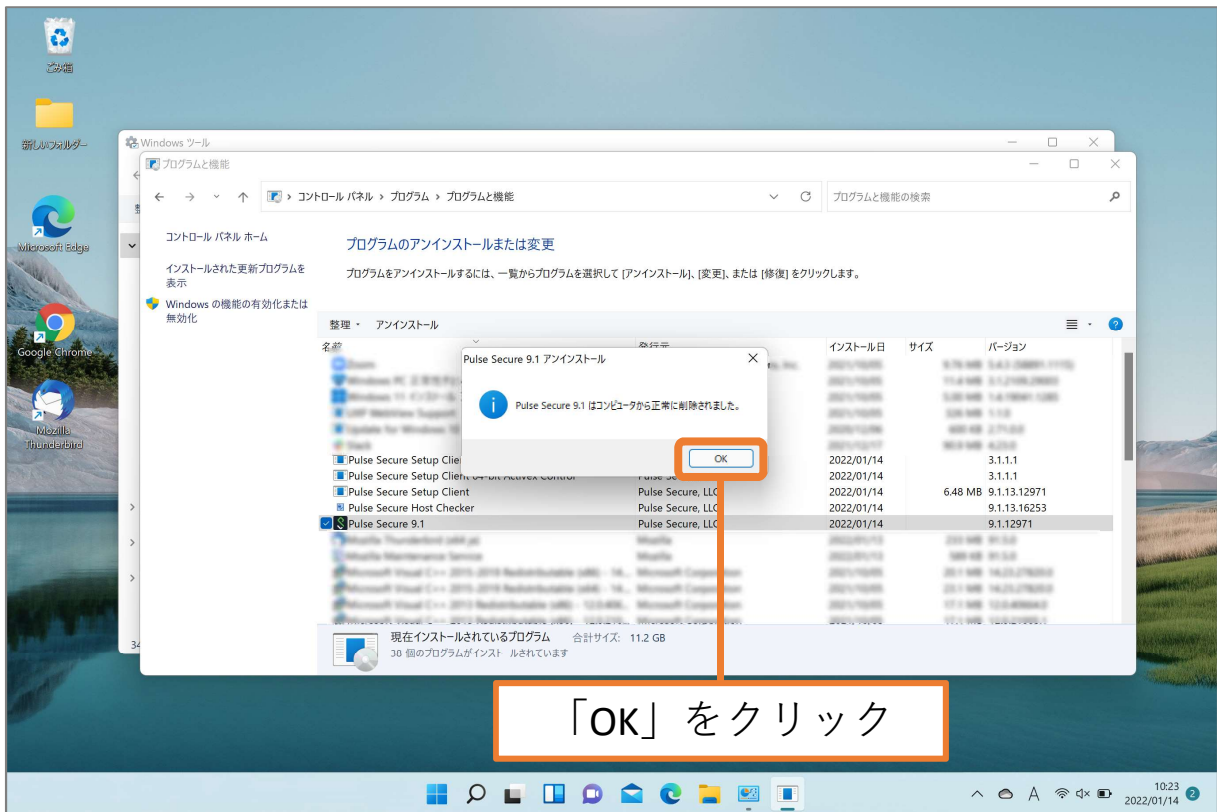
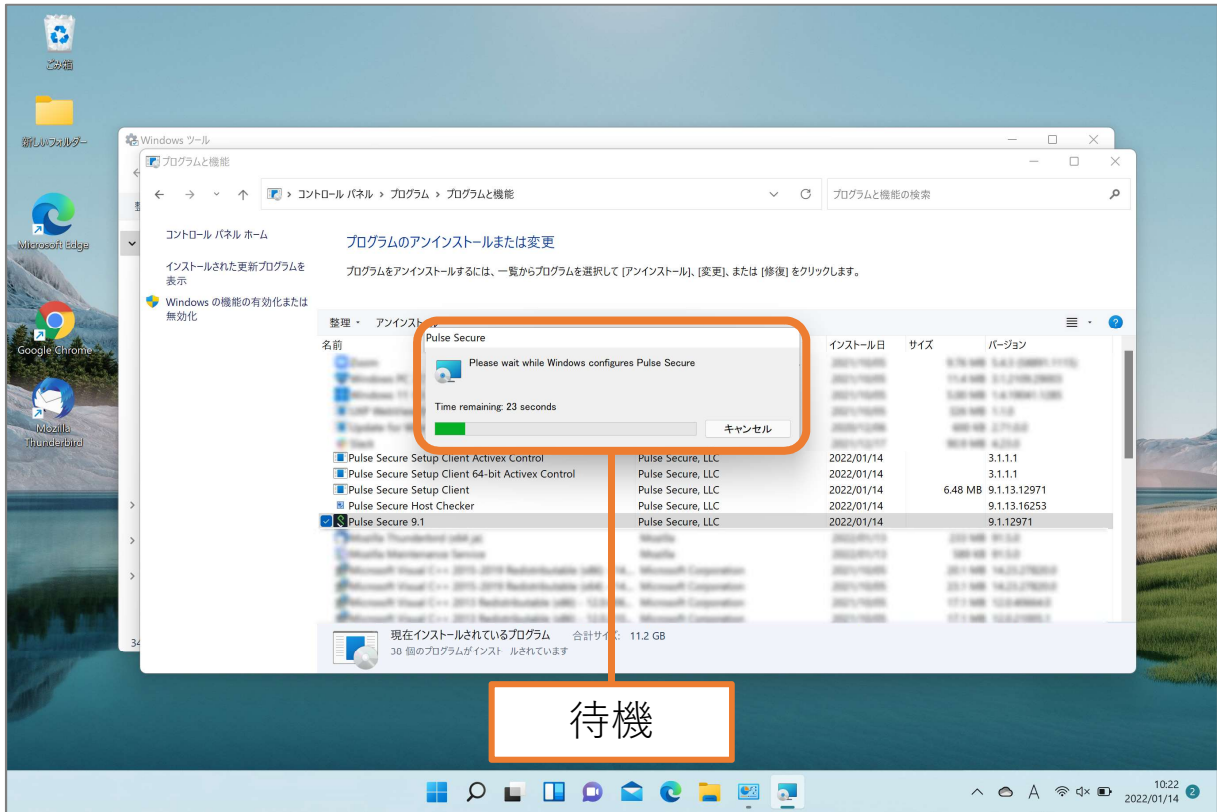


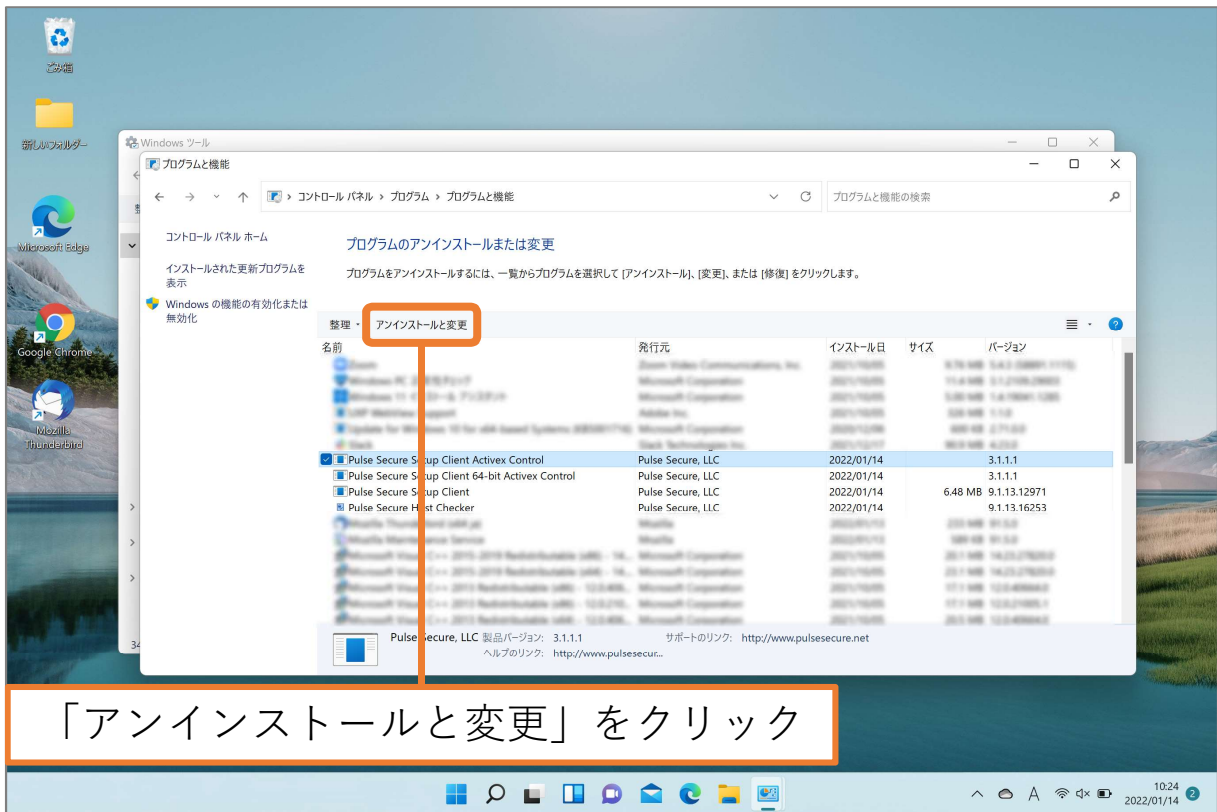
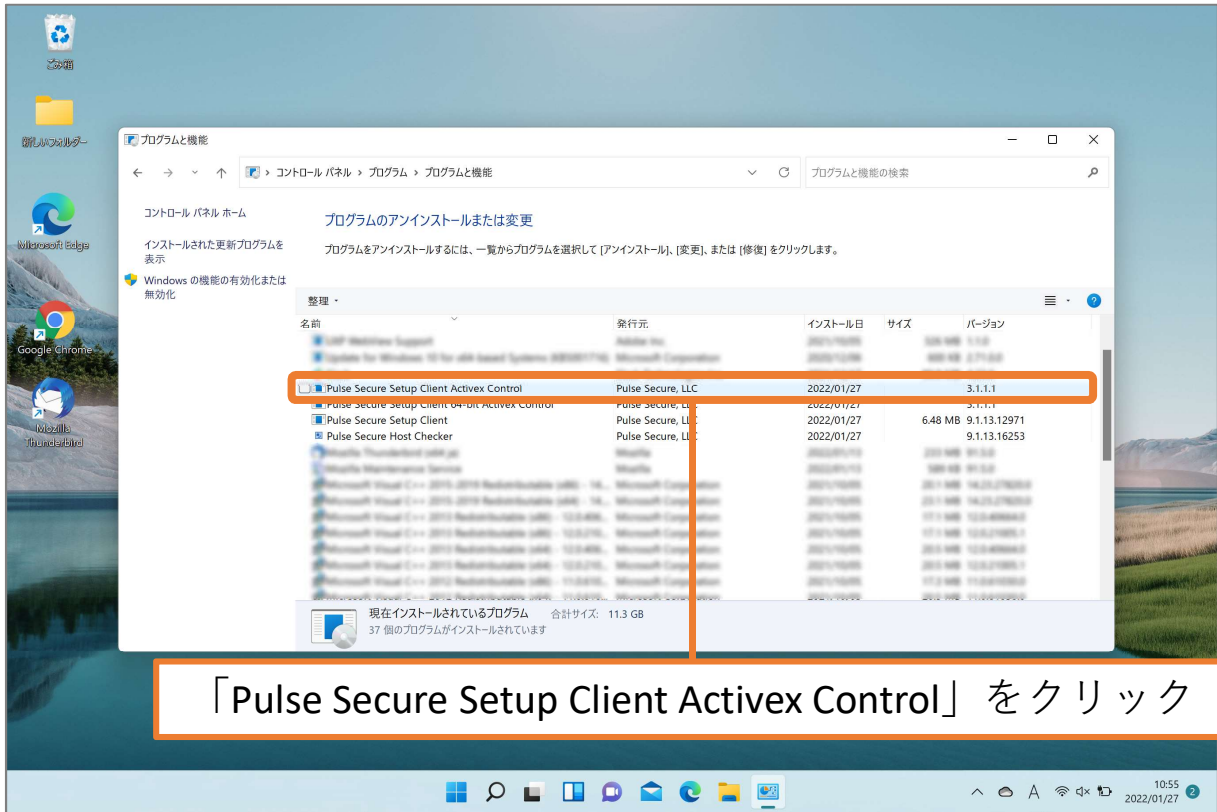






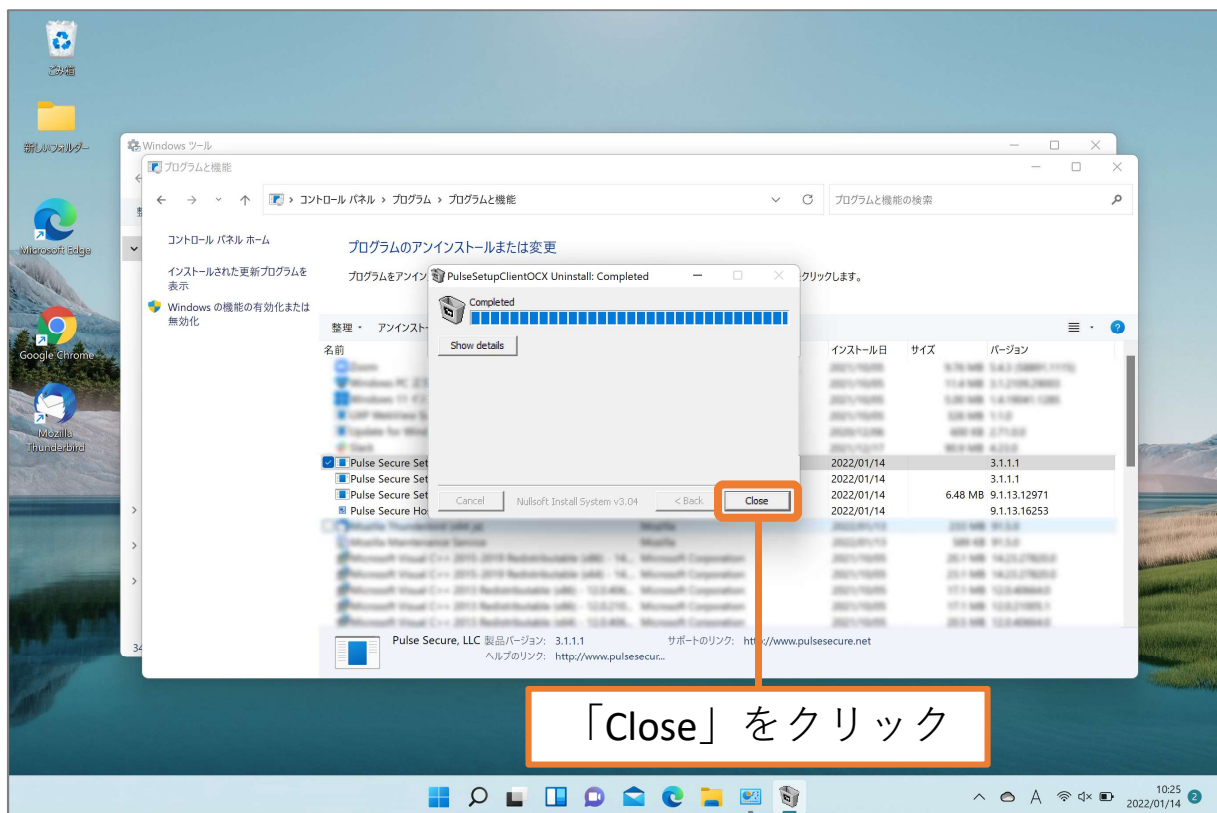


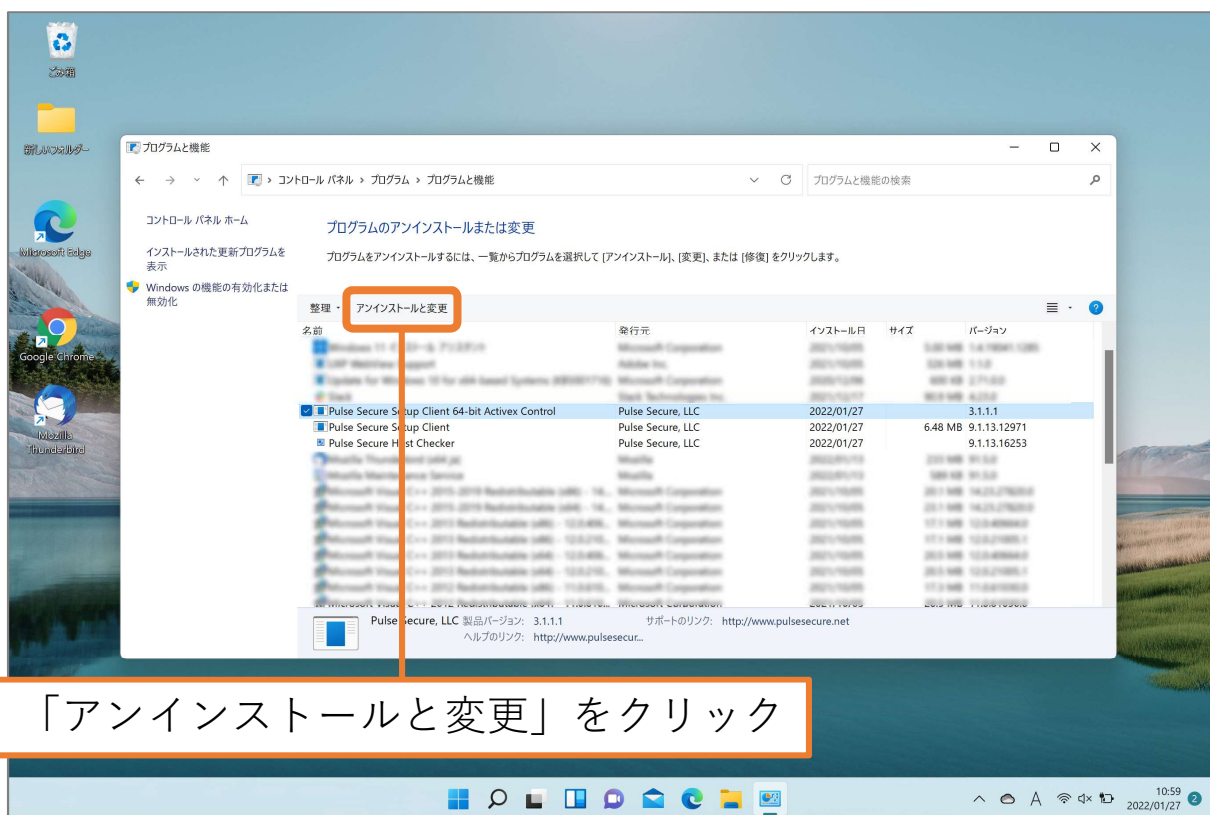
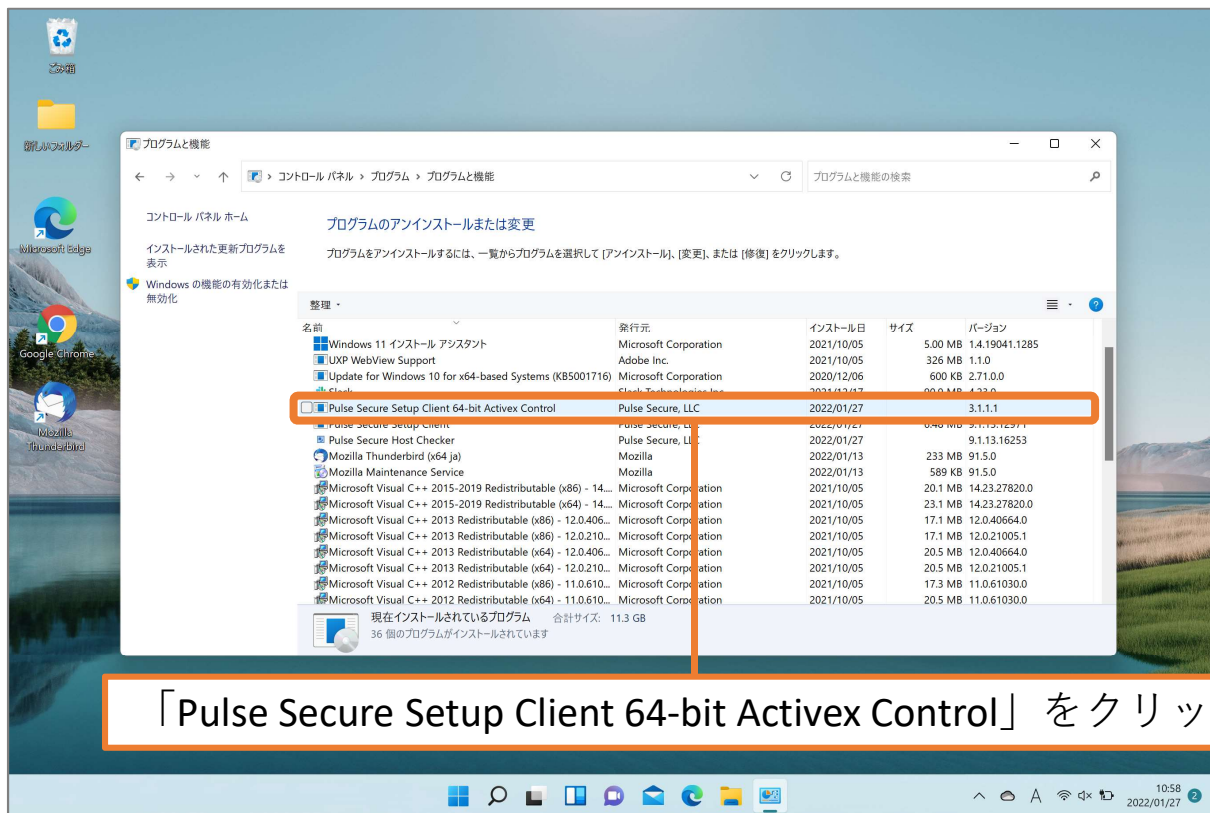






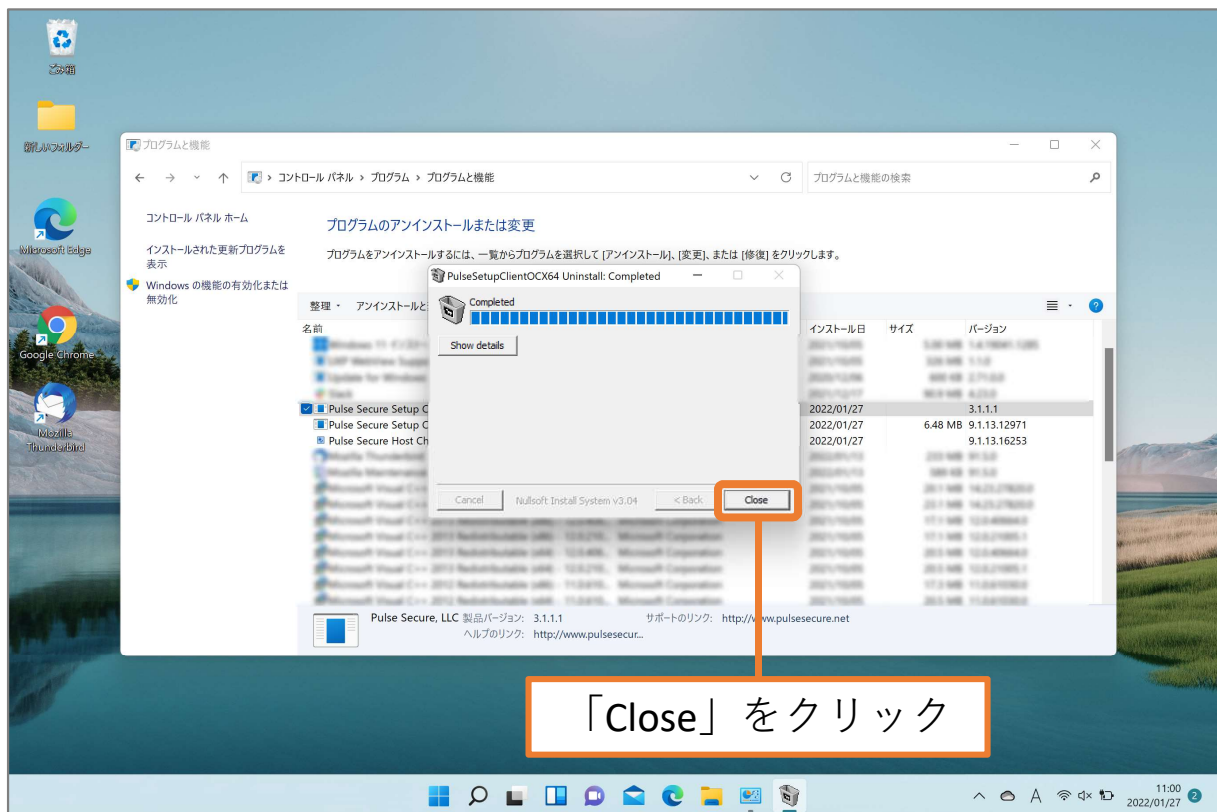
「はい」をクリック

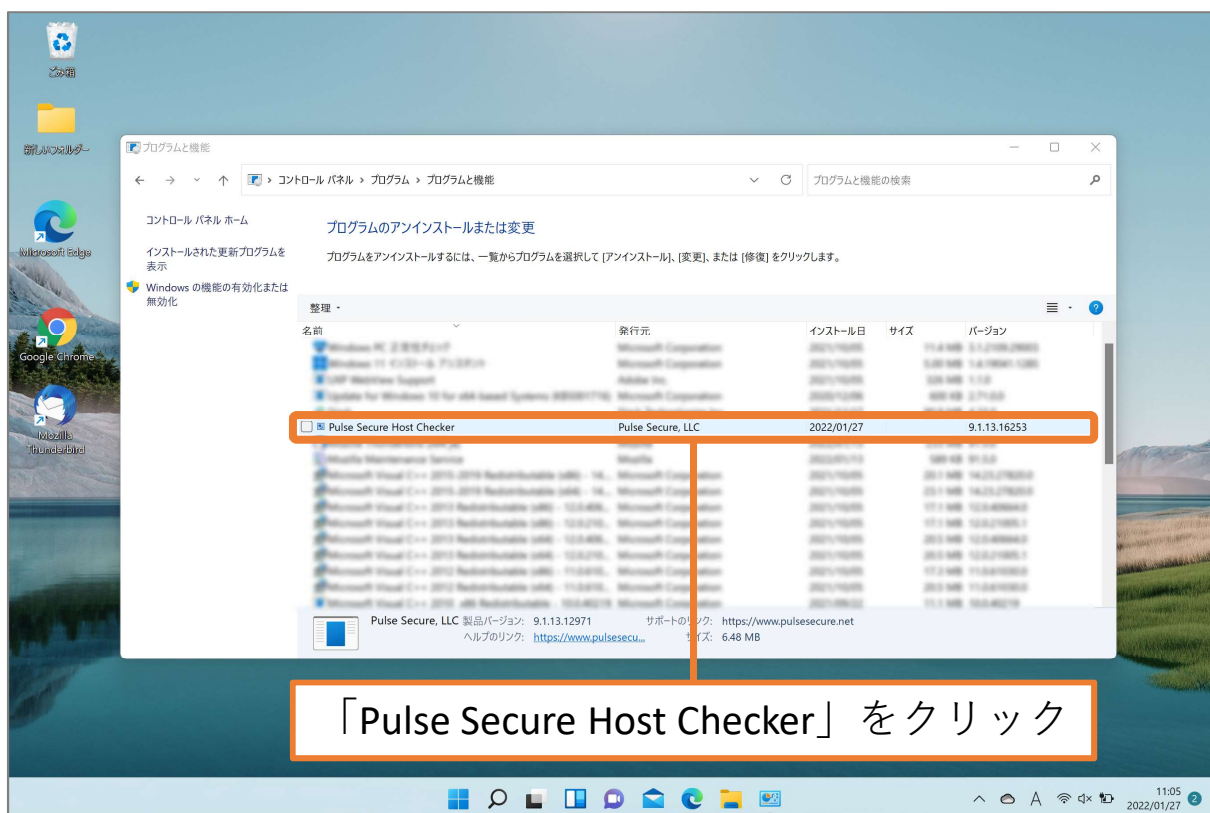
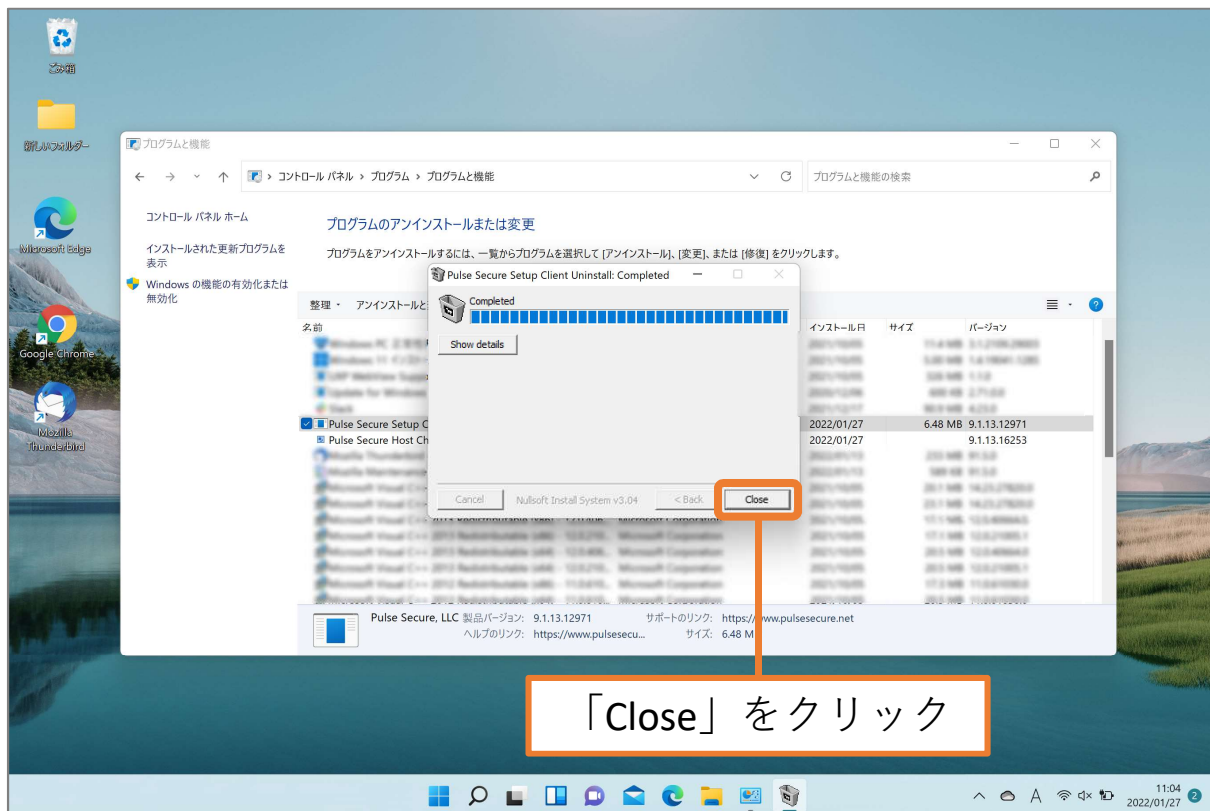


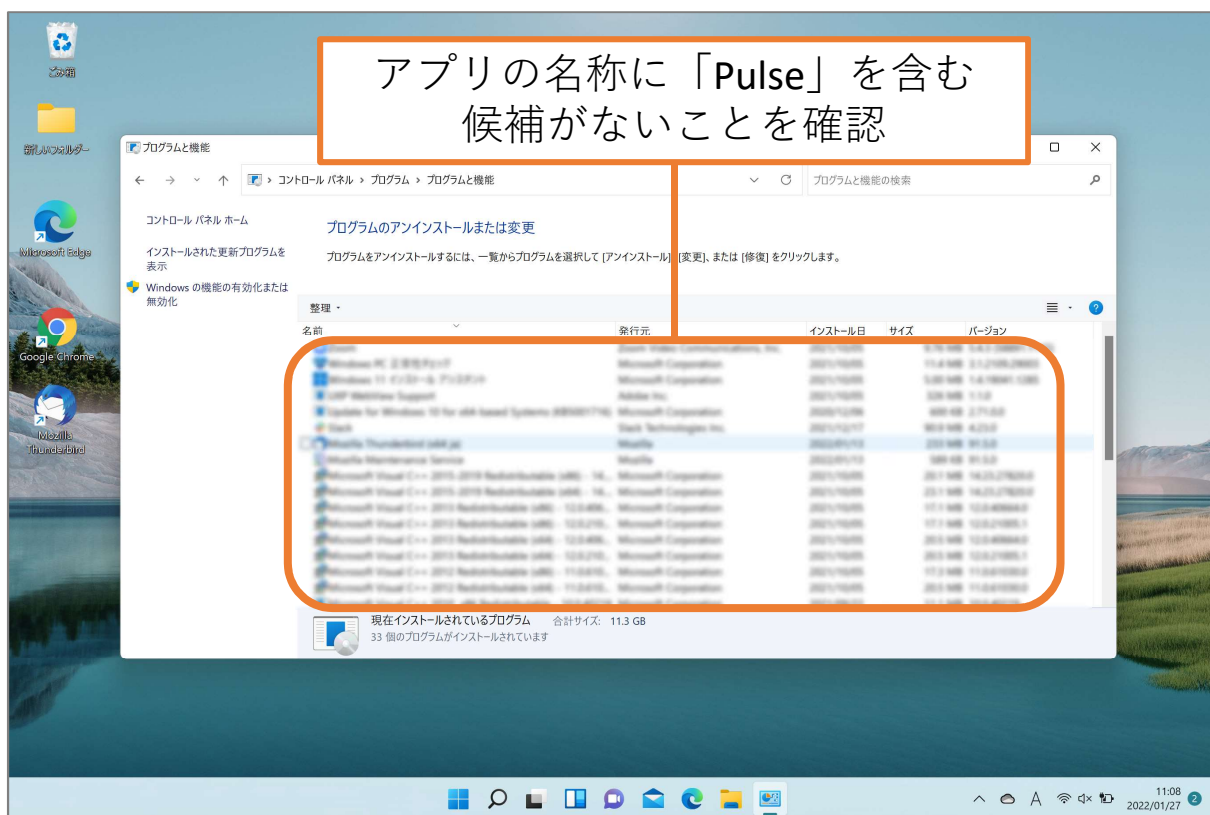
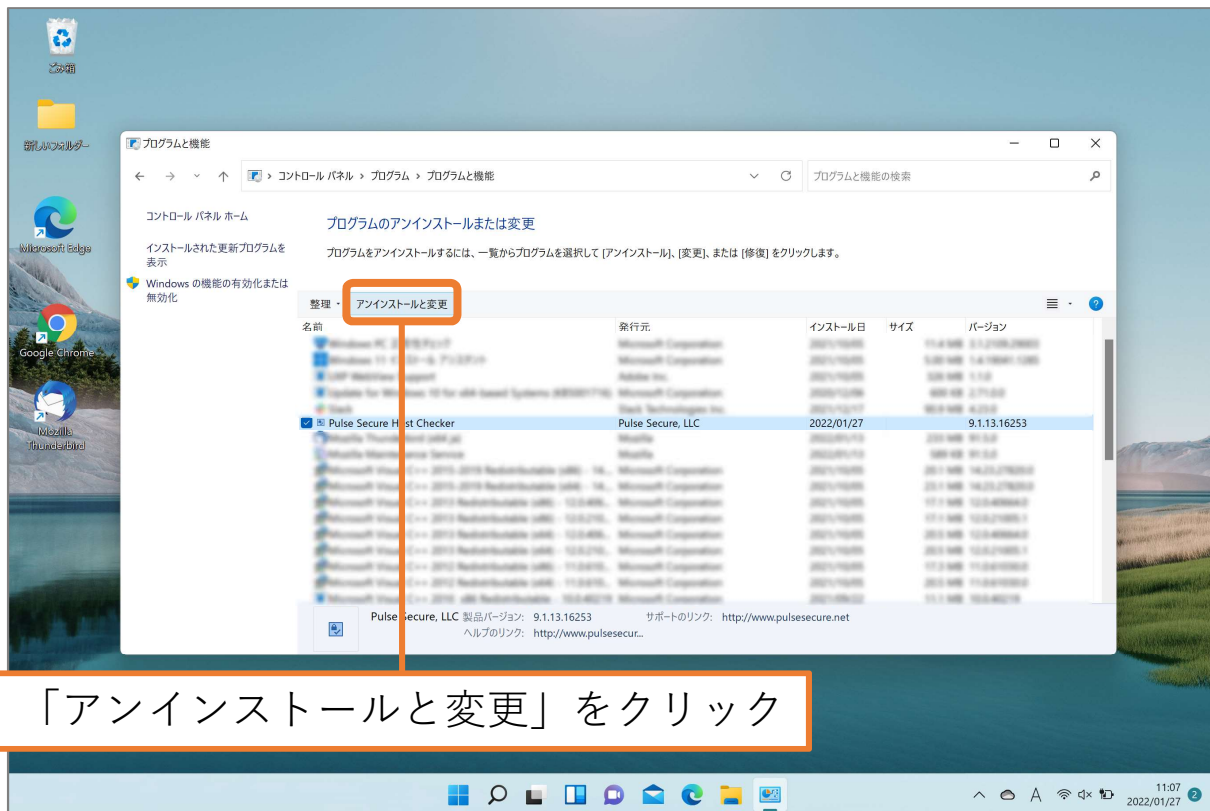


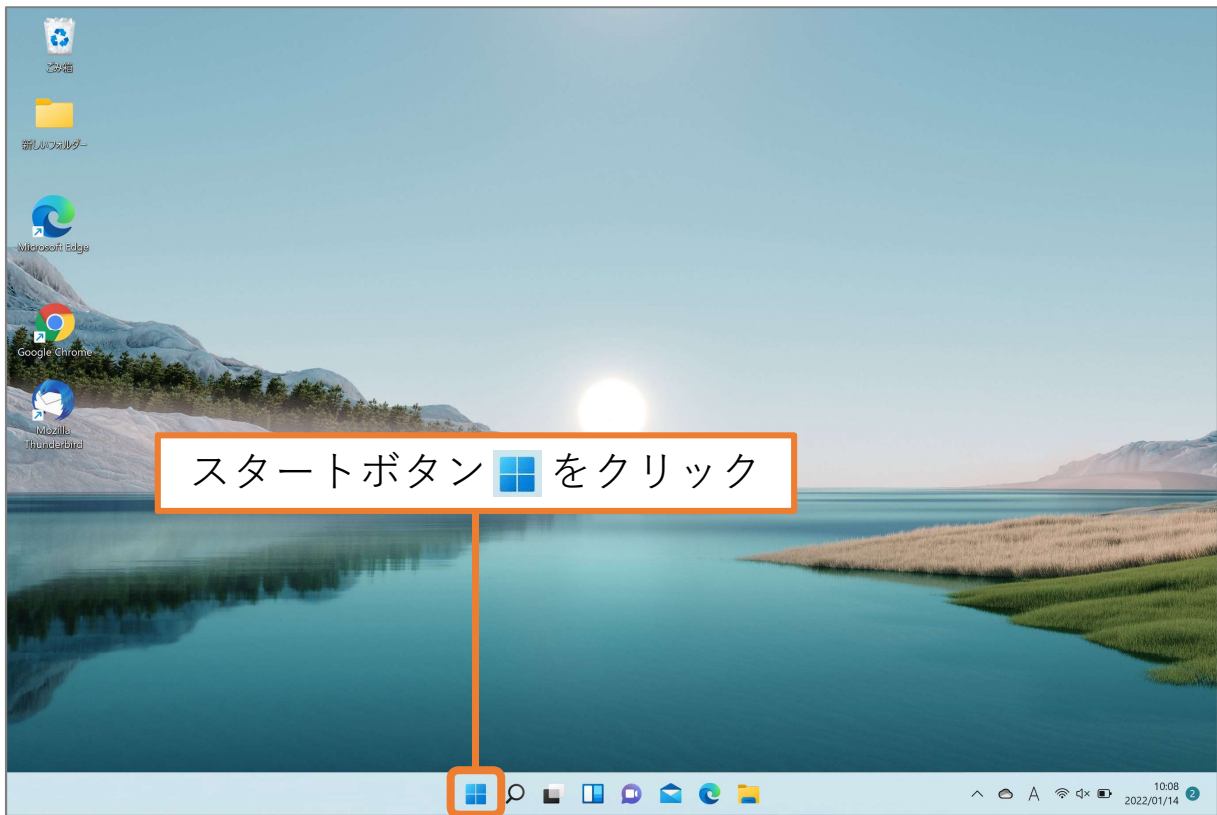
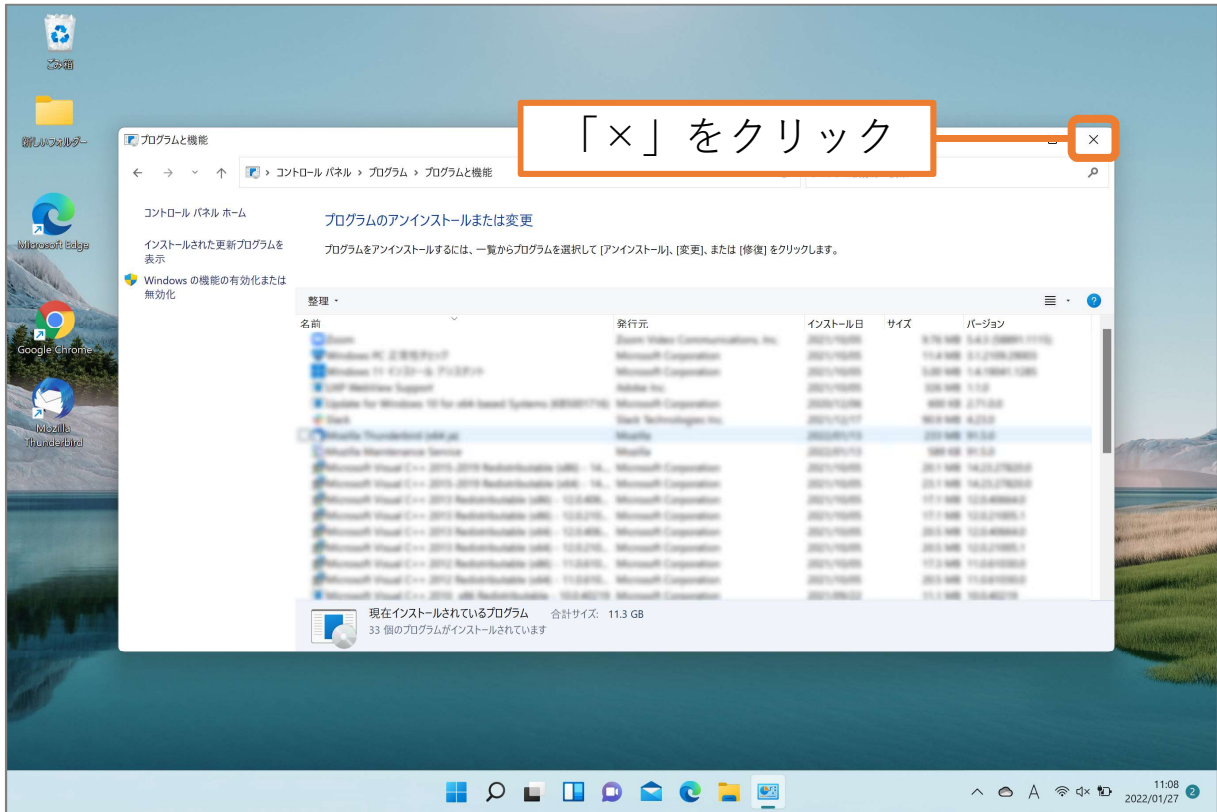


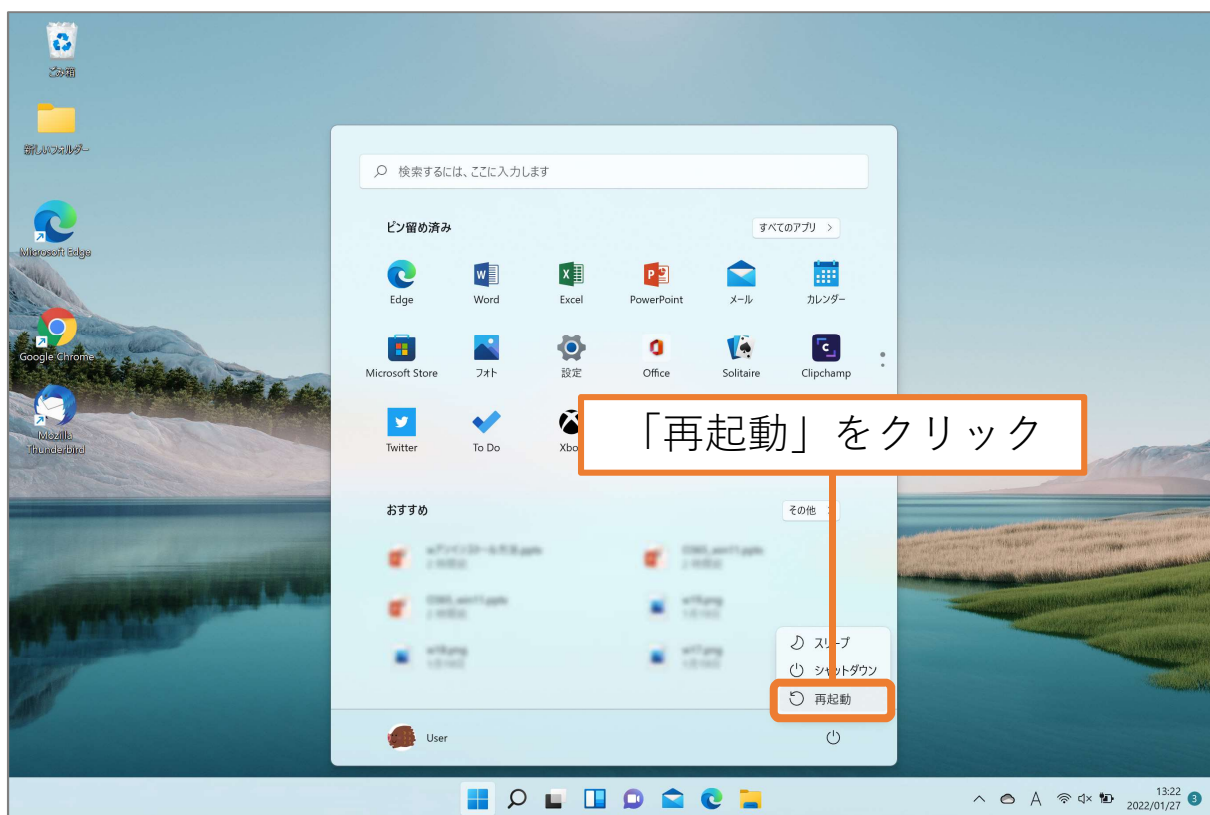
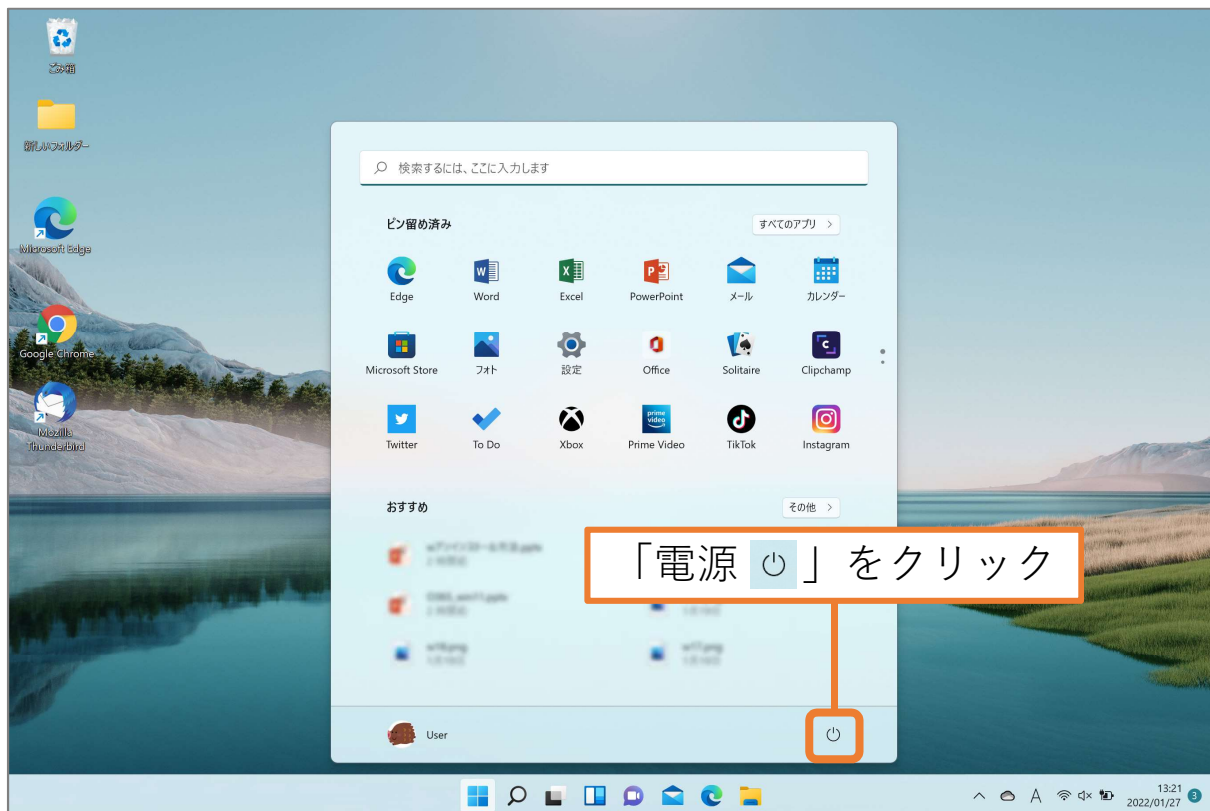
「はい」をクリック











アンインストール完了